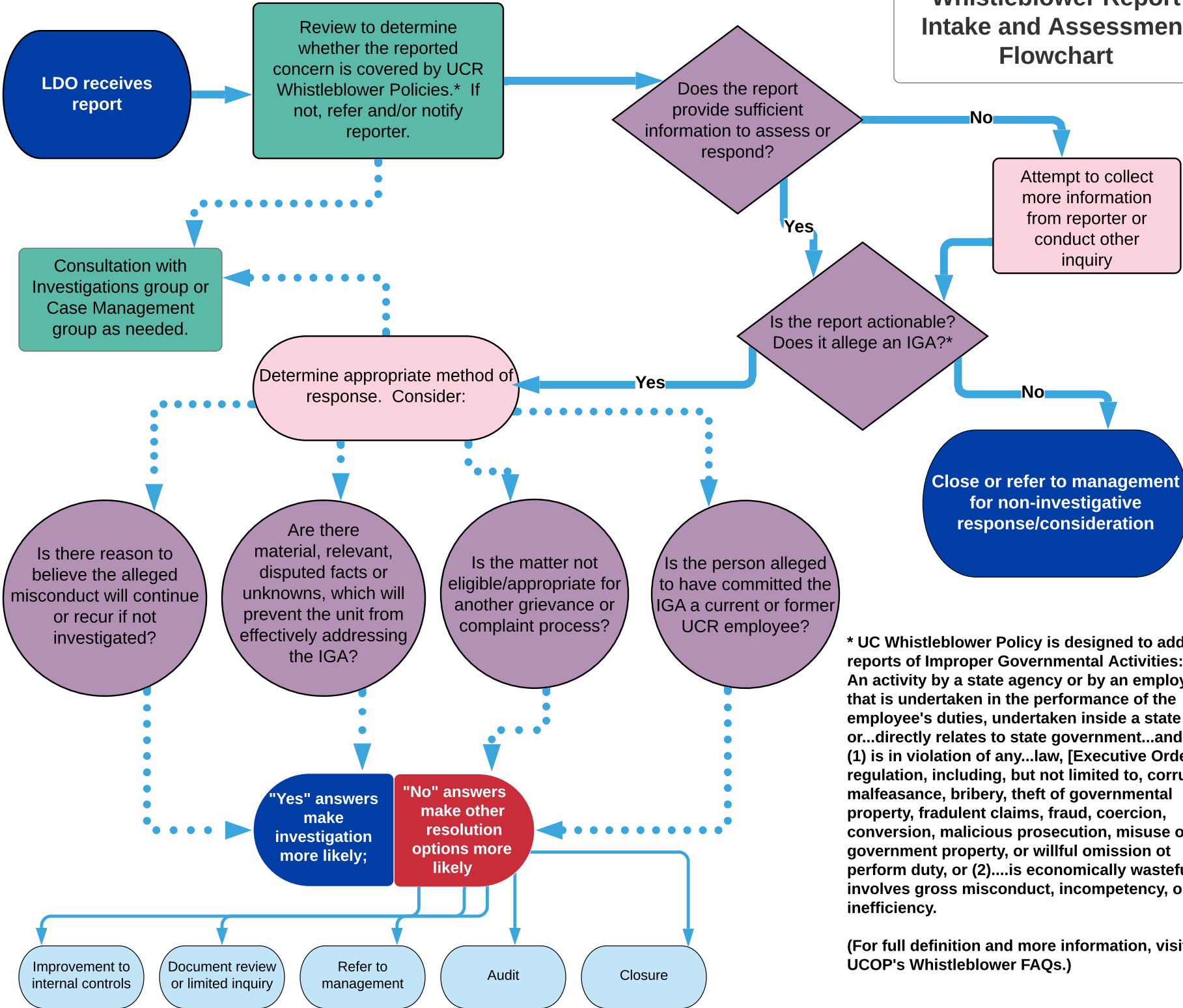


Whistleblower Report Intake and Assessment Flowchart



* UC Whistleblower Policy is designed to address reports of Improper Governmental Activities: An activity by a state agency or by an employee that is undertaken in the performance of the employee's duties, undertaken inside a state office, or...directly relates to state government...and that (1) is in violation of any...law, [Executive Order] or regulation, including, but not limited to, corruption, malfeasance, bribery, theft of governmental property, fraudulent claims, fraud, coercion, conversion, malicious prosecution, misuse of government property, or willful omission of perform duty, or (2)...is economically wasteful, involves gross misconduct, incompetency, or inefficiency.

(For full definition and more information, visit UCOP's Whistleblower FAQs.)